

STEERING GROUP

Item No.	Part No.	Description	Qty.	Item No.	Part No.	Description	Qty.
1.	0008584	Steering Wheel	1	22.	0007540	Vertical Socket (L.H. Thread)	2
2.	0007209	Steering Wheel Nut	1	23.	1010648	Etiquette Decal	1
3.	0007834	Sponge Washer	1	24.	1010535	Pencil Holder	1
4.	0007841	Plastic Steering Column Bushing	1	25.	1010534	Double Torsion Spring	1
5.	N/A	Housing and Jacket Tube Assembly		26.	1010715	Tri-Lobular Phillips Truss Head Screw	1
6.	0000320	3/8 - 16 UNC x 1" Hex Bolt	4	27.	0007216	5/16 - 18 UNC Flat Hd. Screw	1
7.	0008754	3/8 - 16 UNC Locknut	4	28.	1010671	Scorecard Plate	1
8.	0008233	1/4 - 20 UNC Locknut	2	29.	Kit*	Ball Cup	1
9.	0000357	3/8 Lockwasher	3	30.	Kit*	Roller Retainer Assembly	1
10.	0000705	3/8 - 16 UNC x 1 1/4" Hex Bolt	3	31.	N/A	Worn Shaft	
11.	1010192	Steering Box Mounting Plate	1	32.	Kit*	Ball Cup Washer	1
12.	0000334	3/8 Flatwasher	4	33.	1011363	Adjusting Plug	1
13.	0007539	Vertical Socket (R.H. Thread)	2	34.	1011373	Cotter Pin	1
14.	0007602	3/8 - 24 UNF Hex Nut	4	35.	Kit**	Foam Seal	1
15.	0001035	3/32 x 1" Cotter Pin	4	36.	Kit**	Foam Seal Retainer	1
16.	0001308	1/2 - 20 UNC Hex Nut	2	37.	1011367	Output Cam	1
17.	1011770	Base Plate	2	38.	1011368	Adjusting Screw	1
18.	1011764	Mounting Clamp	2	39.	1011369	9/16 - 18 UNF Hex Jam Nut	1
19.	1010219	Tie Rod	1	40.	1011370	3/4 - 16 UNF Jam Nut	2
20.	0008756	Drag Link	1	41.	1011371	3/4 Flatwasher	1
21.	0007555	1/2 - 20 UNF Hex Nut (L.H. Thread)	2	42.	0000343	1/4 - 20 UNC x 3" Hex Head Bolt	2

\* Kit 1011401 - Ball Cup & Retainer Kit

Includes Item No. 29 (2), No. 30 (2), No. 32 (1)

\*\* Kit 1011400 - Foam Seal Kit

Includes Item No. 35 (1), No. 36 (1)

Kit 1011417 - Scorecard Kit

Includes Item No. 28, No. 26, No. 25, No. 24, No. 23

Kit 1011772 - Steering Column Clamp Kit

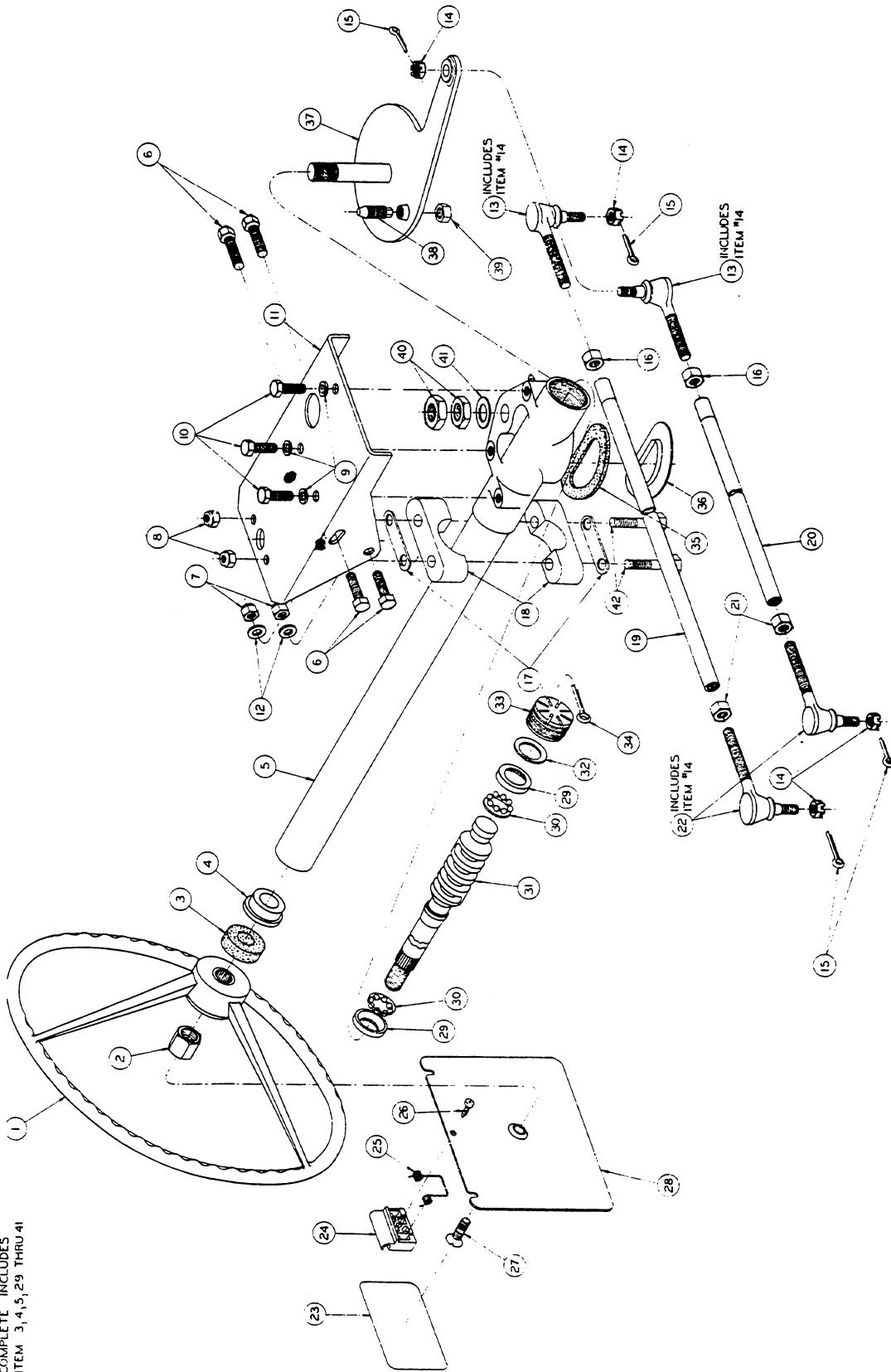
Includes Item No. 17, No. 18, No. 42

INCLUDE PART NUMBER OF EACH PART ORDERED AND SERIAL NUMBER OF CAR

Issue Date

Effective Serial No. A8036-15260 thru A8411-52366

100018 - STEERING GEAR  
COMPLETE INCLUDES  
ITEM 3, 4, 5, 29 THRU 41



INCLUDE PART NUMBER OF EACH PART ORDERED AND SERIAL NUMBER OF CAR