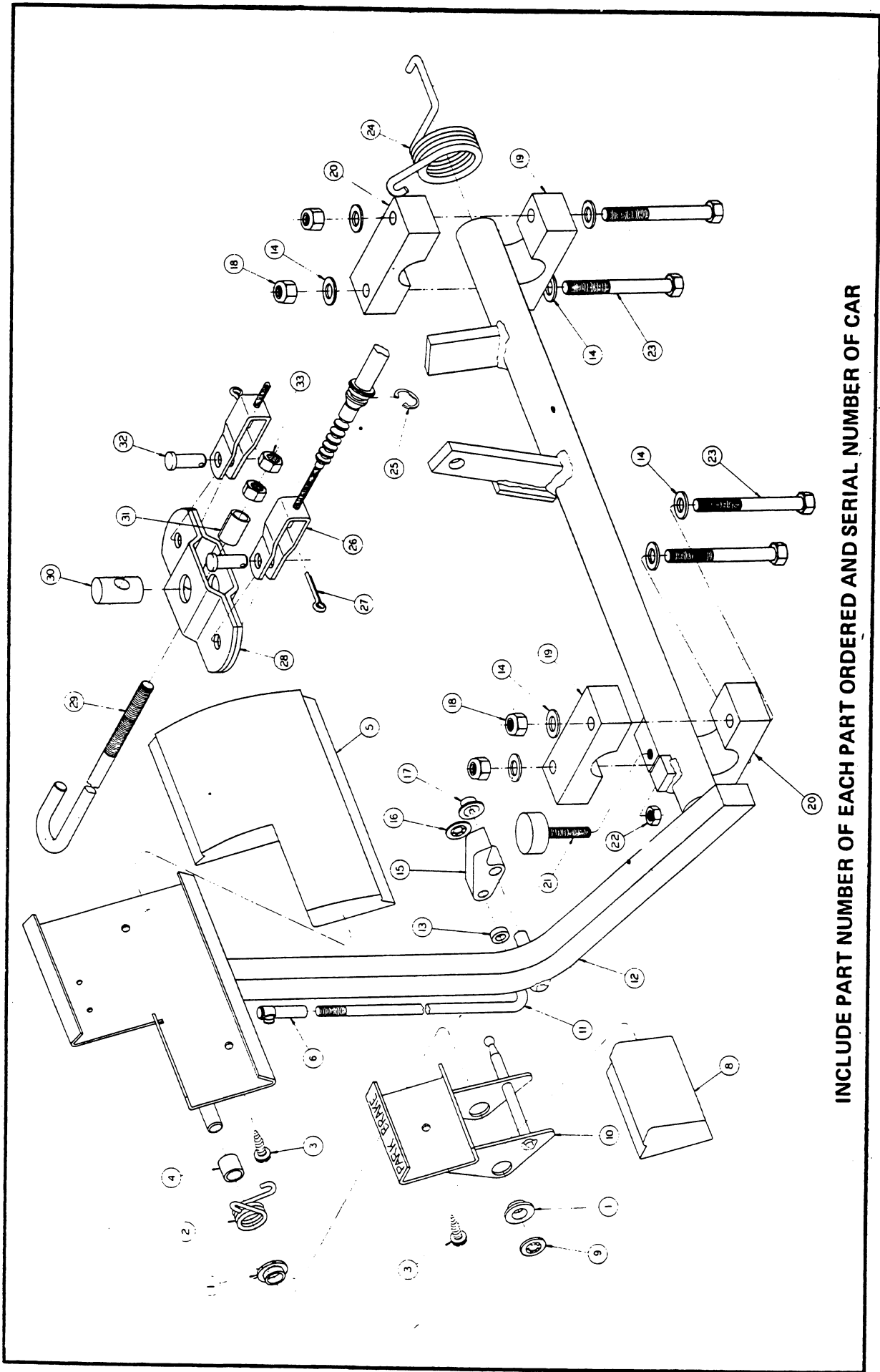


BRAKE PEDAL AND CABLE ASSEMBLY

<u>Item No.</u>	<u>Part No.</u>	<u>Description</u>	<u>Qty.</u>	<u>Item No.</u>	<u>Part No.</u>	<u>Description</u>	<u>Qty.</u>
1.	0001032	Nylon Bushing	2	18.	0007473	5/16 - 18 UNC Nylon Insert Locknut	4
2.	1010933	Torsion Spring	1	19.	1011402	Brake Mounting Block Package (Includes Item No. 19 (2), No. 20 (2))	1
3.	0007716	No. 10 - 16 Type AB Sheet Metal Screw	3	21.	1010878	Brake Stop	1
4.	1010927	Hill Brake Spacer	1	22.	0001028	1/4 - 20 UNC Hex Nut	1
5.	1010833	Brake Pedal Pad	1	23.	1010921	5/16 - 18 UNC x 2 1/2" Hex Head Bolt	1
6.	1010932	1/4 - 28 UNF Ball Joint	1	24.	1010935	Brake Return Torsion Spring	4
7.				25.	1011779	"E" Ring	1
8.	1010832	Hill Brake Pad	1	26.	Kit*	Brake Cable Kit	4
9.	1011650	3/8 Push Nut	1	27.	0001035	Cotter Pin	2
10.	Kit**	Hill Brake Kit	1	28.	1010809	Equalizer Weld Assembly	4
11.	1010804	Hill Brake Rod	1	29.	1010808	Equalizer Rod	1
12.	Kit***	Brake Pedal Kit	1	30.	1010814	Equalizer Pivot Pin	1
13.	1010805	Hill Brake Rod Sleeve	1	31.	1010546	Equalizer Spacer	1
14.	0001241	5/16 Flat Washer	8	32.	1010829	5/16 Clevis Pin	1
15.	Kit****	Hill Brake Pawl Kit	1	33.	0001242	5/16 - 18 UNC Hex Nut	4
16.	1011649	Push Nut	1				2
17.	1010877	5/16 Push Nut	1				

- * Kit 1011403 - Brake Cable Kit
Includes Item No. 25 (2), No. 27 (2), No. 32 (2), No. 26 (1)
- ** Kit 1011418 - Hill Brake Pedal Kit
Includes Item No. 10 (1), No. 8 (1), No. 3 (1), No. 1 (2), No. 9 (1)
- *** Kit 1011406 - Brake Pedal Kit
Includes Item No. 5 (1), No. 3 (2), No. 12 (1)
- **** Kit 1011404 - Hill Brake Pawl Kit
Includes Item No. 15 (1), No. 16 (i), No. 17 (1)

INCLUDE PART NUMBER OF EACH PART ORDERED AND SERIAL NUMBER OF CAR



INCLUDE PART NUMBER OF EACH PART ORDERED AND SERIAL NUMBER OF CAR

Issue Date 8/1/83

Effective Serial No. A8036-15260 thru _____